



SHALIMAR



SPECIFICATIONS

LOA: 118' Benetti Jet Drive
BEAM: 24'
DRAFT: 4'
BUILT: 1996/REFIT: 2004
TYPE: Tri-Deck
CONSTRUCTION: Fiberglass hull and super structure, teak decks
MAIN ENGINES: (2) MTU Jet Drive diesels, 2,610hp each
SPEED: Max: 18.0 knots
Min: 14.0 knots
FUEL: 5,000 Gallons
WATER: 710 Gallons

EQUIPMENT

Extensive audio,TV,video and DVD systems in Main Salon, Penthouse and all guest cabins.
Electro hydraulic boat crane on tender deck
32'6 Century Center Console Tender
19' Novurania w/90hp Yamaha tender
integral transom swim platform with stainless steel safety rails
Bathing Ladder
8 Sets of dive gear
2x2-man kayaks
Wakeboard,Windsurfer,Water Skis, Ski Tubes & Ski Bob
Snorkel Equipment,Brownie's Third Lung.
2-man SeaDoo Waverunner
Video, CD and DVD library
Satellite TV
2x Mini "M" satellite telephones
Sea-Tel satellite internet

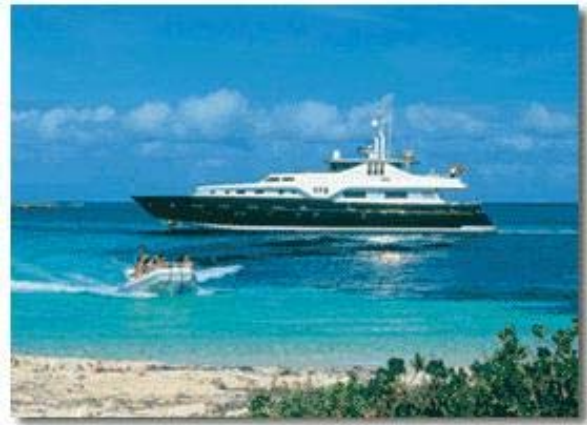
SHALIMAR was designed and built to spectacular standards to guarantee elegance, luxury, style, comfort and fun. A true five-star vessel for the ultimate luxury vacation.

IN YOUR HANDS is the key to unlocking the ultimate holiday - the perfect vacation. From this very moment, you hold the power to create a world that exists only to bring you pleasure. There are no limits! Imagine a world of pampered perfection, where, beneath a clear cerulean sky and bathed in the warmth of an island sun, you relax by the jacuzzi, cool cocktail by your side, languishing in paradise.

A world of palatial proportions so richly-appointed and dramatically designed, that it lovingly embraces both gala gatherings and personal privacy. The main salon and dining salon are show pieces of high gloss Italian walnut with an abundance of leather furnishings, wool carpets and marble.



Play Time



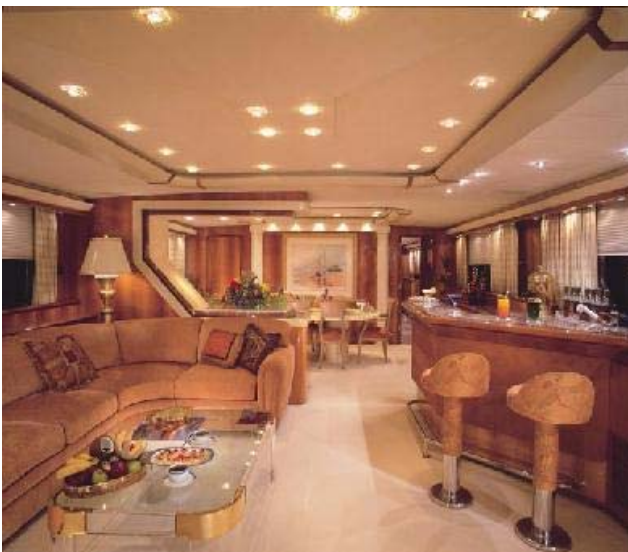
At Anchor



Dining Out



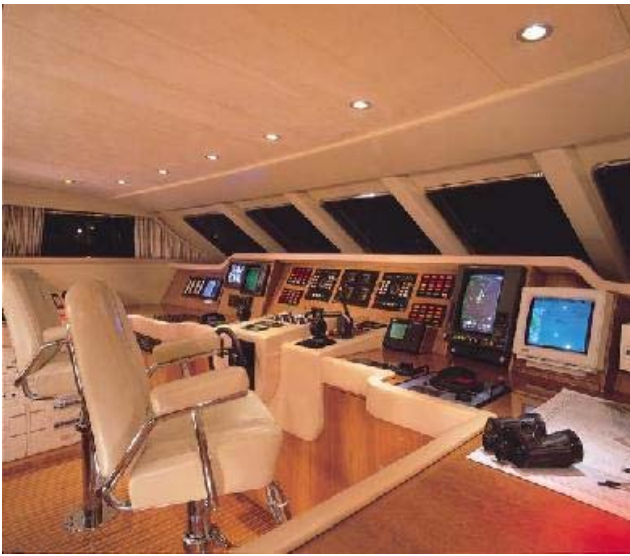
Jacuzzi



Main Salon



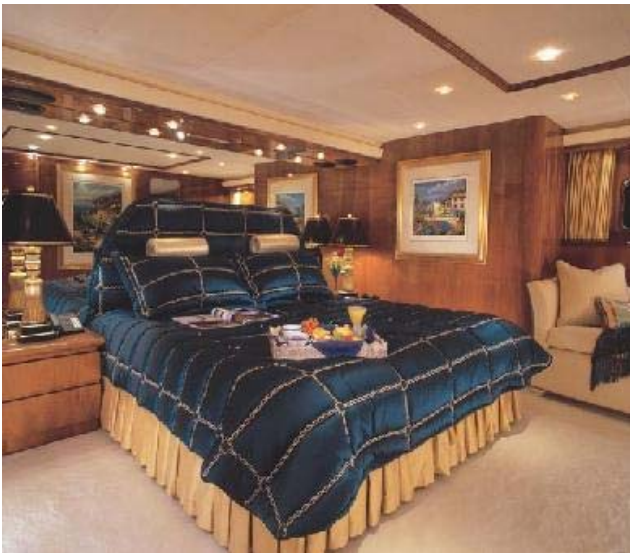
Sky Lounge



Wheel House



Dining In



Master Stateroom



Master Bath



VIP Stateroom



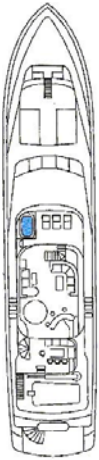
Guest Stateroom



Guest Stateroom



Multi-Purpose room



Upper Deck



Main Deck



Lower Deck

Crew Profile

This document is not contractual. All specifications are given in good faith and offered for informational purposes only. The publisher and company does not warrant or assume any legal liability or responsibility for the accuracy, completeness, or usefulness of any information and/or images displayed. Yacht inventory, specifications and charter prices are subject to change without prior notice. None of the text and/or images used in this brochure maybe reproduced without written consent

from the publisher

AquaCruise Ltd

Tel: +44 (0) 14 25 67 33 74 Fax: +44 (0) 20 70 67 84 63
info@aquacruise.com www.aquacruise.com